



Location plan - scale 1:1250

Net internal area

1st floor - NIA	100 m ²	1,076 ft ²
2nd floor - NIA	83 m ²	893 ft ²
All Floors - NIA	297 m ²	3,196 ft ²

The following has been INCLUDED from the Net Internal Area:

Store 46 m² 495 sq ft

The following area has been EXCLUDED from the Net Internal Area.

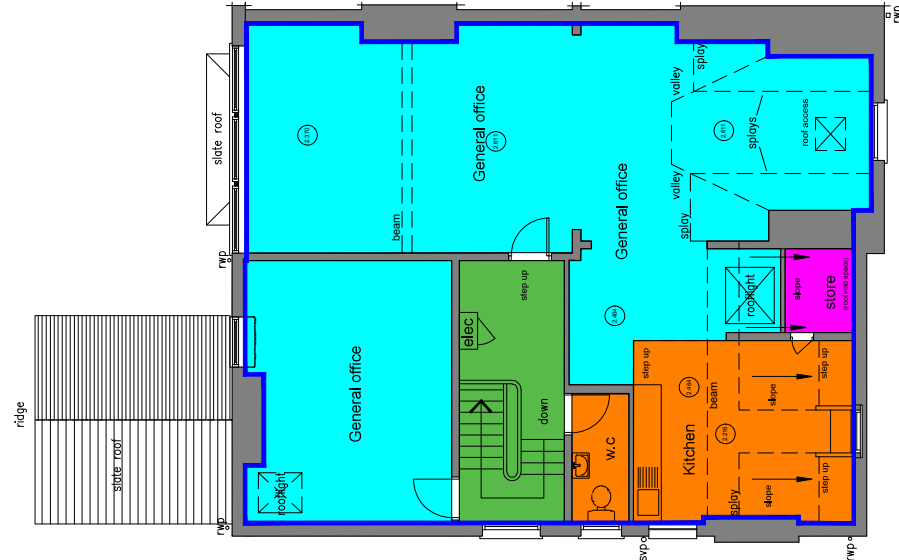
Internal Dominant Face

Structural Features

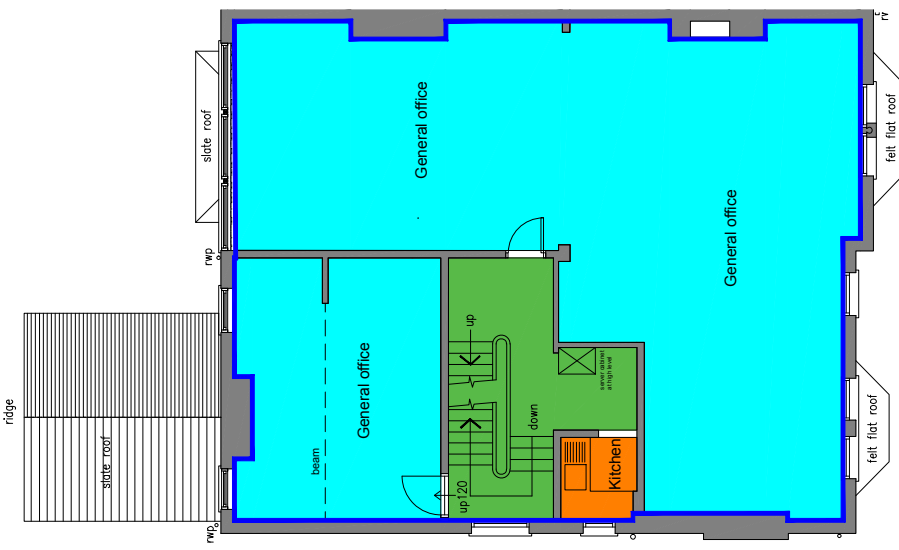
Kitchen, W.C
 Hall

Gross internal area

GIA	412 m ²	4,434.4 ft ²
-----	--------------------	-------------------------



2nd floor



1st floor

Notes:

THIS DRAWING IS COPYRIGHT PROTECTED AND REMAINS THE PROPERTY OF SAVILLS (UK) LIMITED. ALL WORK MUST COMPLY WITH THE RELEVANT AUTHORITIES REQUIREMENTS. DIMENSIONS MUST NOT BE SCALED FROM THIS PRINT.



Savills (UK) Limited
 55 Colmore Row
 Birmingham
 B3 2QA
 Tel: 0121 633 3733
 Fax: 0121 633 3666
 www.savills.com

CLIENT	Calthroppe Estates	PROJECT	4, Greenfield Crescent	SCHEME NUMBER	
ADDRESS	4, Greenfield Crescent	DRAWING NUMBER	02	DATE	September 2019
CITY	Birmingham	REVISION			
POSTCODE	B15 3BE				
DRAWING TITLE	Existing 1st + 2nd floor G.A. Layouts				
CAD REFERENCE					
SCALE	1:100@A3	DRAWN BY	J.P.	CHECKED BY	